

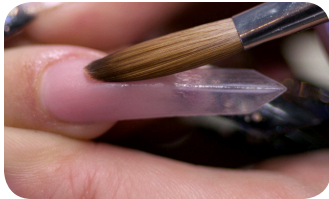
Secrets

SPARKLING EDGE NAIL ART



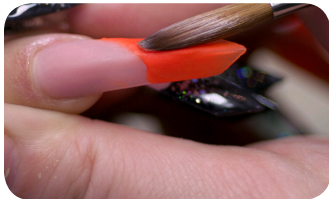
STEP 1:

Thoroughly prepare the natural nail. Apply a **Secrets Edge Nail Tip** using **Polybond**. Hold Snug for 10 seconds. Blend the tip to the natural nail, remove dust with an **Plush Brush** and wipe with **NailPure Plus**.



STEP 2:

Using **Secrets Primerless Nail Liquid** and **Secrets Disguise Masquerade Powder** in a medium wet mix ratio, apply the bead at zone 3, be sure to leave a small hairline gap between the product and cuticle. Apply another bead at zone 2, taper the product, brushing the remaining product onto the tip.



STEP 3:

Use **Secrets Shade In the Hot Seat**, starting in zone 2, blend into your **Disguise Powder** towards the sidewall. You will not need a crisp smile line as you are layering the product and will not have ridges. Be sure to cover the remaining tip for a full color coverage.



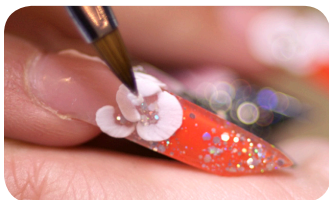
STEP 4:

Starting at the sidewall, apply **Secrets Effects Powder Selini** on to where your **Disguise** and **In The Hot Seat** meet to mask the joint. Work upwards to the spine of the nail. Apply a bit more towards the tip edge to create dimension in the design.



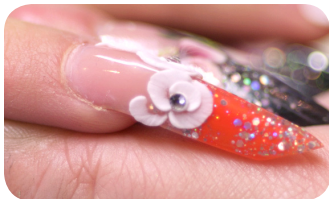
STEP 5:

Starting in zone 2 apply **Secrets Pure Ice Powder**, to the entire extension, to encapsulate the design. Define your apex and shape. File the nail with the shape of the tip, to smooth the product, and keep the crisp Edge nail shape. Using your **Plush Brush**, remove dust. Apply **Glaze 'N Go** and cure in a full hand UV lamp for 90 Seconds.



STEP 6:

Use the **HD 3D Brush** to pick up a small bead of **Secrets Shade Little White Lies**. Start creating the petals for your flower. Start at the outer petals adding petals to build the flower up towards the center, adding various sized petals to the nail until you are happy with your flower.



STEP 7:

Leave a small dot of **Little White Lies** in the center of your flower. Apply a dab of **Polybond** to the dot of **Little White Lies** and gently apply a **Secrets Bling Crystal** to the glue. Hold the Crystal in place for 10 seconds to ensure it holds.